

Medication Guide

Lamotrigine (lam-OH-try-jeen) Extended-Release Tablets, USP

What is the most important information I should know about lamotrigine extended-release tablets?

1. Lamotrigine extended-release tablets may cause a serious skin rash that may cause you to be hospitalized or even cause death.

There is no way to tell if a mild rash will become more serious. A serious skin rash can happen at any time during your treatment with lamotrigine extended-release tablets, but is more likely to happen within the first 2 to 8 weeks of treatment. Children aged between 2 and 16 years have a higher chance of getting this serious skin rash while taking lamotrigine extended-release tablets. Lamotrigine extended-release tablets are not approved for use in children younger than 13 years.

The risk of getting a serious skin rash is higher if you:

- take lamotrigine extended-release tablets while taking valproate [DEPAKENE (valproic acid) or DEPAKOTE (divalproex sodium)].
- take a higher starting dose of lamotrigine extended-release tablets than your healthcare provider prescribed.
- increase your dose of lamotrigine extended-release tablets faster than prescribed.

The risk of serious skin reactions may be associated with a variant in genes called HLA-B*1502 in people from Asian origin (mainly of Han Chinese and Thai origin). See “**Before taking lamotrigine extended-release tablets, tell your healthcare provider about all of your health conditions**”.

Call your healthcare provider right away if you have any of the following:

- a skin rash
- blistering or peeling of your skin
- hives
- painful sores in your mouth or around your eyes

These symptoms may be the first signs of a serious skin reaction. A healthcare provider should examine you to decide if you should continue taking lamotrigine extended-release tablets.

2. Other serious reactions, including serious blood problems or liver problems. Lamotrigine extended-release tablets can also cause other types of allergic reactions or serious problems that may affect organs and other parts of your body like your liver or blood cells. You may or may not have a rash with these types of reactions. Call your healthcare provider right away if you have any of these symptoms:

- fever
- frequent infections
- severe muscle pain
- swelling of your face, eyes, lips, or tongue
- swollen lymph glands
- unusual bruising or bleeding, looking pale
- weakness, fatigue
- yellowing of your skin or the white part of your eyes
- trouble walking or seeing
- seizures for the first time or happening more often
- pain and/or tenderness in the area towards the top of your stomach (enlarged liver and/or spleen)

3. In patients with known heart problems, the use of lamotrigine extended-release tablets may lead to a fast heart beat. Call your healthcare provider right away if you:

- have a fast, slow, or pounding heart beat.
- feel your heart skip a beat.
- have shortness of breath.
- have chest pain.
- feel lightheaded.

4. Like other antiepileptic drugs (AEDs), lamotrigine extended-release tablets may cause suicidal thoughts or actions in a very small number of people, about 1 in 500.

Call a healthcare provider right away if you have any of these symptoms, especially if they are new, worse, or worry you:

- thoughts about suicide or dying
- attempt to commit suicide
- new or worse depression
- new or worse anxiety
- feeling agitated or restless

- panic attacks
- trouble sleeping (insomnia)
- new or worse irritability
- acting aggressive, being angry, or violent
- acting on dangerous impulses
- an extreme increase in activity and talking (mania)
- other unusual changes in behavior or mood

Do not stop lamotrigine extended-release tablets without first talking to a healthcare provider.

- Stopping lamotrigine extended-release tablets suddenly can cause serious problems.
- Suicidal thoughts or actions can be caused by things other than medicines. If you have suicidal thoughts or actions, your healthcare provider may check for other causes.

How can I watch for early symptoms of suicidal thoughts and actions in myself or a family member?

- Pay attention to any changes, especially sudden changes, in mood, behaviors, thoughts, or feelings.
- Keep all follow-up visits with your healthcare provider as scheduled.
- Call your healthcare provider between visits as needed, especially if you are worried about symptoms

5. Lamotrigine extended-release tablets may cause aseptic meningitis, a serious inflammation of the protective membrane that covers the brain and spinal cord.

Call your healthcare provider right away if you have any of the following symptoms:

- headache
- fever
- nausea
- vomiting
- stiff neck
- rash
- unusual sensitivity to light
- muscle pains
- chills
- confusion
- drowsiness

Meningitis has many causes other than lamotrigine extended-release tablets, which your doctor would check for if you developed meningitis while taking lamotrigine extended-release tablets.

Lamotrigine extended-release tablets can cause other serious side effects. For more information ask your healthcare provider or pharmacist. Tell your healthcare provider if you have any side effect that bothers you. Be sure to read the section below entitled “What are the possible side effects of lamotrigine extended-release tablets?”

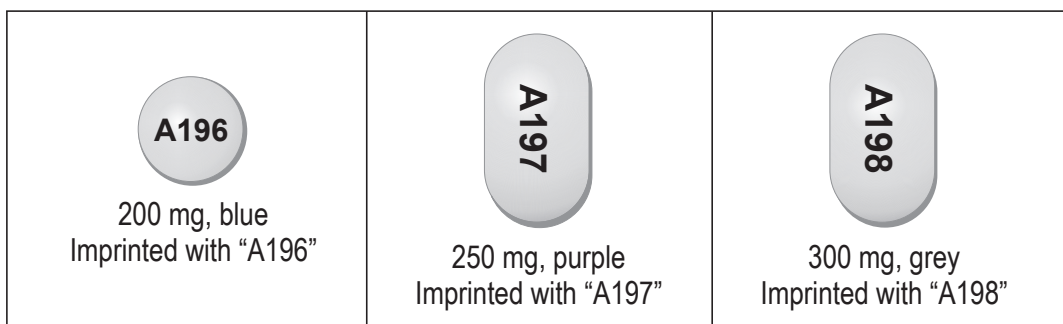
6. People prescribed lamotrigine extended-release tablets have sometimes been given the wrong medicine because many medicines have names similar to lamotrigine extended-release tablets, so always check that you receive lamotrigine extended-release tablets.

Taking the wrong medication can cause serious health problems. When your healthcare provider gives you a prescription for lamotrigine extended-release tablets:

- Make sure you can read it clearly.
- Talk to your pharmacist to check that you are given the correct medicine.
- Each time you fill your prescription, check the tablets you receive against the pictures of the tablets below.

These pictures show the distinct wording, colors, and shapes of the tablets that help to identify the right strength of lamotrigine extended-release tablets. Immediately call your pharmacist if you receive a lamotrigine extended-release tablets tablet that does not look like one of the tablets shown below, as you may have received the wrong medication.

Lamotrigine Extended-Release Tablets



What are lamotrigine extended-release tablets?

- Lamotrigine extended-release tablets are a prescription medicine used:
 - together with other medicines to treat primary generalized tonic-clonic seizures and partial-onset seizures in people aged 13 years and older.
 - alone when changing from 1 other medicine used to treat partial-onset seizures in people aged 13 years and older.
- It is not known if lamotrigine extended-release tablets are safe or effective in children younger than 13 years. Other forms of lamotrigine can be used in children aged 2 to 12 years.
- It is not known if lamotrigine extended-release tablets are safe or effective when used alone as the first treatment of seizures.

Do not take lamotrigine extended-release tablets:

- if you have had an allergic reaction to lamotrigine or to any of the inactive ingredients in lamotrigine extended-release tablets. See the end of this leaflet for a complete list of ingredients in lamotrigine extended-release tablets.

Before taking lamotrigine extended-release tablets, tell your healthcare provider about all of your health conditions, including if you:

- have had a rash or allergic reaction to another antiseizure medicine.
- are of Asian origin. have had HLA testing before, and know you are carrying the genetic variant, HLA-B*1502.
- have or have had depression, mood problems, or suicidal thoughts or behavior.
- have a history of heart problems or irregular heart beats or any of your family members have any heart problem, including genetic abnormalities.
- have had aseptic meningitis after taking lamotrigine or lamotrigine extended-release tablets.
- are taking estrogen-containing products, including oral contraceptives (birth control pills) or other female hormonal medicines (such as hormone replacement therapy). Do not start or stop taking birth control pills or other female hormonal medicine until you have talked with your healthcare provider. Tell your healthcare provider if you have any changes in your menstrual pattern such as breakthrough bleeding. Stopping these medicines while you are taking lamotrigine extended-release tablets may cause side effects (such as dizziness, lack of coordination, or double vision). Starting these medicines may lessen how well lamotrigine extended-release tablets works.
- are pregnant or plan to become pregnant. It is not known if lamotrigine extended-release tablets may harm your unborn baby. If you become pregnant while taking lamotrigine extended-release tablets, talk to your healthcare provider about registering with the North American Antiepileptic Drug Pregnancy Registry. You can enroll in this registry by calling 1-888-233-2334. The purpose of this registry is to collect information about the safety of AEDs during pregnancy.
- are breastfeeding. Lamotrigine passes into breast milk and may cause side effects in a breastfed baby. If you breastfeed while taking lamotrigine extended-release tablets, watch your baby closely for trouble breathing, episodes of temporarily stopping breathing, sleepiness, or poor sucking. Call your baby's healthcare provider right away if you see any of these problems. Talk to your healthcare provider about the best way to feed your baby if you take lamotrigine extended-release tablets.

Tell your healthcare provider about all the medicines you take, including prescription and over-the-counter medicines, vitamins, and herbal supplements. Lamotrigine extended-release tablets and certain other medicines may interact with each other.

This may cause serious side effects.

Know the medicines you take. Keep a list of them to show your healthcare provider and pharmacist when you get a new medicine.

How should I take lamotrigine extended-release tablets?

- Take lamotrigine extended-release tablets exactly as prescribed.
- Your healthcare provider may change your dose. Do not change your dose without talking to your healthcare provider.
- Do not stop taking lamotrigine extended-release tablets without talking to your healthcare provider. Stopping lamotrigine extended-release tablets suddenly may cause serious problems. For example, if you have epilepsy and you stop taking lamotrigine extended-release tablets suddenly, you may have seizures that do not stop. Talk with your healthcare provider about how to stop lamotrigine extended-release tablets slowly.
- If you miss a dose of lamotrigine extended-release tablets, take it as soon as you remember. If it is almost time for your next dose, just skip the missed dose. Take the next dose at your regular time. **Do not take 2 doses at the same time.**
- If you take too much lamotrigine extended-release tablets, call your healthcare provider or your local Poison Control Center or go to the nearest hospital emergency room right away.
- You may not feel the full effect of lamotrigine extended-release tablets for several weeks.
- If you have epilepsy, tell your healthcare provider if your seizures get worse or if you have any new types of seizures.
- Lamotrigine extended-release tablets can be taken with or without food.
- Do not chew, crush, or divide lamotrigine extended-release tablets.
- Swallow lamotrigine extended-release tablets whole.
- If you have trouble swallowing lamotrigine extended-release tablets, tell your healthcare provider because there may be another form of lamotrigine you can take.

What should I avoid while taking lamotrigine extended-release tablets?

Do not drive, operate machinery, or do other dangerous activities until you know how lamotrigine extended-release tablets affects you.

What are the possible side effects of lamotrigine extended-release tablets?

Lamotrigine extended-release tablets can cause serious side effects.

See “What is the most important information I should know about lamotrigine extended-release tablets?”

Common side effects of lamotrigine extended-release tablets include:

- dizziness
- vomiting
- tremor
- trouble with balance and coordination
- double vision
- anxiety
- nausea

Other common side effects that have been reported with another form of lamotrigine include headache, sleepiness, blurred vision, runny nose, and rash.

These are not all the possible side effects of lamotrigine extended-release tablets.

Call your doctor for medical advice about side effects. You may report side effects to FDA at 1-800-FDA-1088.

How should I store lamotrigine extended-release tablets?

- Store lamotrigine extended-release tablets at 25°C (77°F); excursions permitted to 15° to 30°C (59° to 86°F) [see USP Controlled Room Temperature].
- Bottle of 30's count comes in a child-resistant package.

Keep lamotrigine extended-release tablets and all medicines out of the reach of children.

General information about the safe and effective use of lamotrigine extended-release tablets

Medicines are sometimes prescribed for purposes other than those listed in a Medication Guide. Do not use lamotrigine extended-release tablets for a condition for which it was not prescribed. Do not give lamotrigine extended-release tablets to other people, even if they have the same symptoms that you have. It may harm them.

If you take a urine drug screening test, lamotrigine extended-release tablets may make the test result positive for another drug. If you require a urine drug screening test, tell the healthcare professional administering the test that you are taking lamotrigine extended-release tablets.

You can ask your healthcare provider or pharmacist for information about lamotrigine extended-release tablets that is written for health professionals.

What are the ingredients in lamotrigine extended-release tablets?

Active ingredient: lamotrigine.

Inactive ingredients: carmine (250 mg tablet only), colloidal silicon dioxide, ethyl acrylate copolymer, FD&C Blue No. 2 Aluminum Lake (200 mg and 250 mg tablets only), ferrousferrous oxide (250 mg and 300 mg tablets only), hypromellose, lactose monohydrate, magnesium stearate, methacrylic acid, polyethylene glycol 400, povidone K-30, silicon dioxide, titanium dioxide and triethyl citrate.

Tablets are imprinted with edible black ink containing ferrousferrous oxide, propylene glycol and shellac.

For more information, contact Alembic Pharmaceuticals Limited at 1-866-210-9797.

All brands mentioned are trademarks of their respective owners and are not trademarks of Alembic Pharmaceuticals Limited.

Manufactured by:

Alembic Pharmaceuticals Limited
(Formulation Division),
Panelav 389350, Gujarat, India

Manufactured for:

Alembic Pharmaceuticals, Inc.
Bedminster, NJ 07921, USA

20040547

This Medication Guide has been approved by the U.S. Food and Drug Administration.

Revised: 01/2026